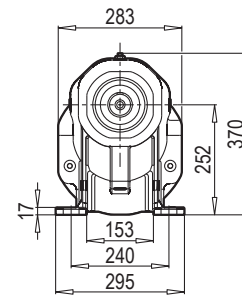
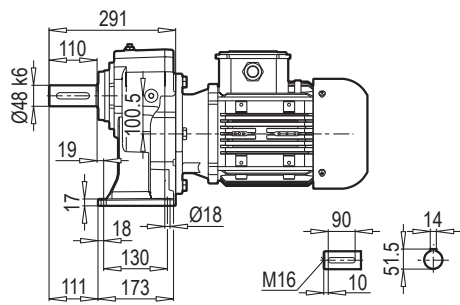
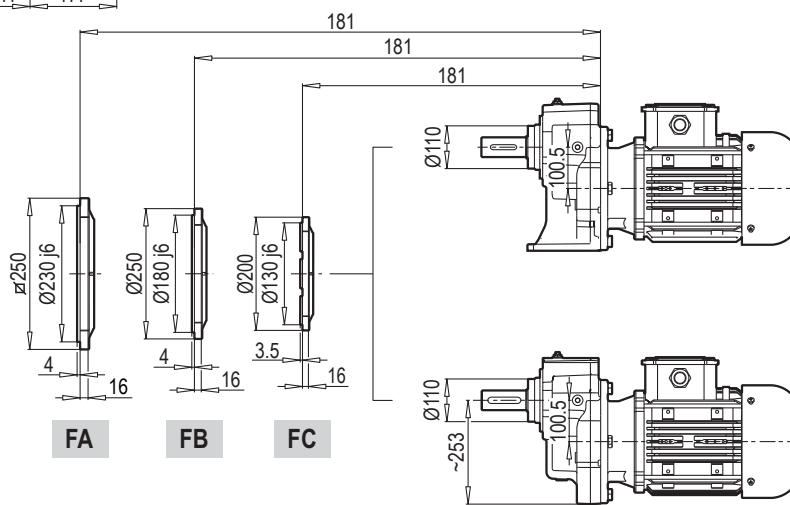
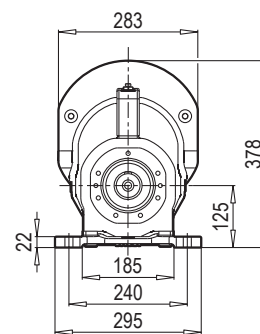
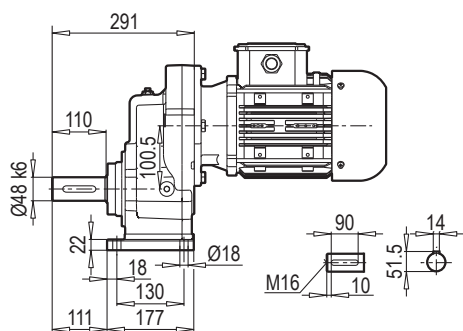


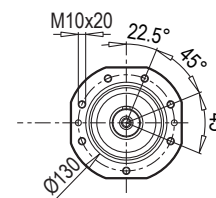
**A 601**



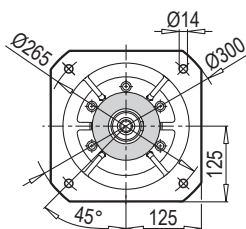
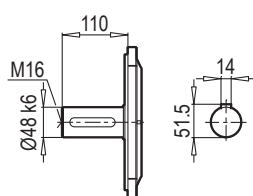
**AF-M 601**



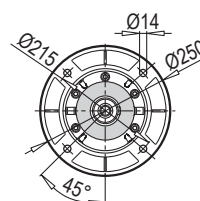
**AF 601**



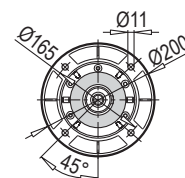
**F 601**



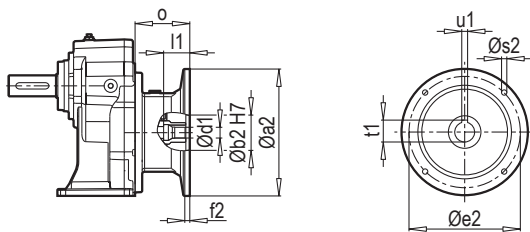
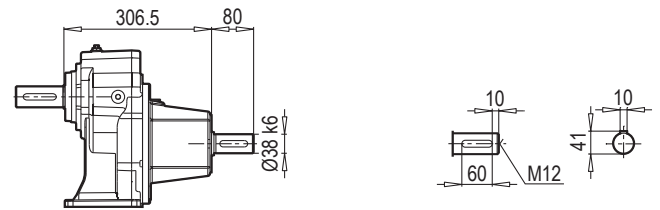
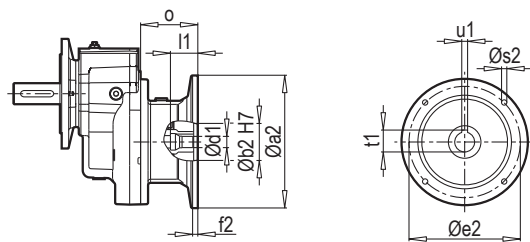
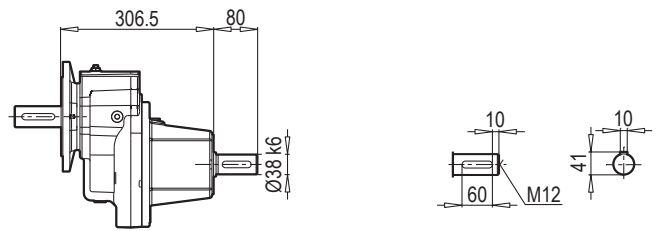
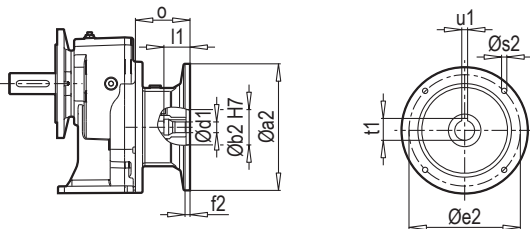
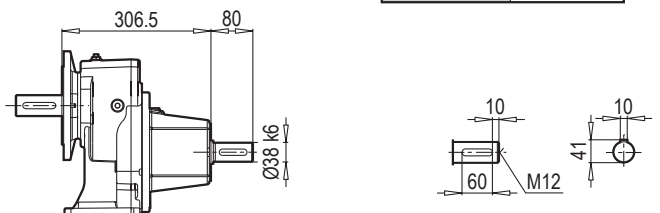
**FA**



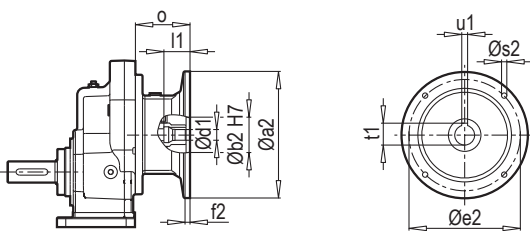
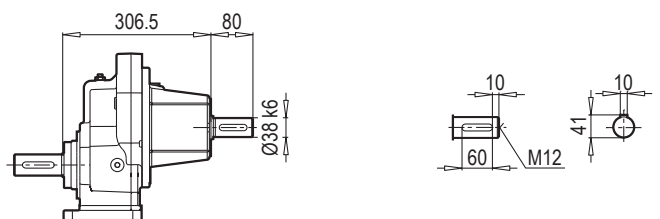
**FB**



**FC**

**A 601 PAM B5/B14**

**A 601 W**

**F 601 PAM B5/B14**

**F 601 W**

**AF 601 PAM B5/B14**

**AF 601 W**


<b>W ~ Kr</b>	
A/F 601	45

**AF-M 601 PAM B5/B14**

**AF-M 601 W**


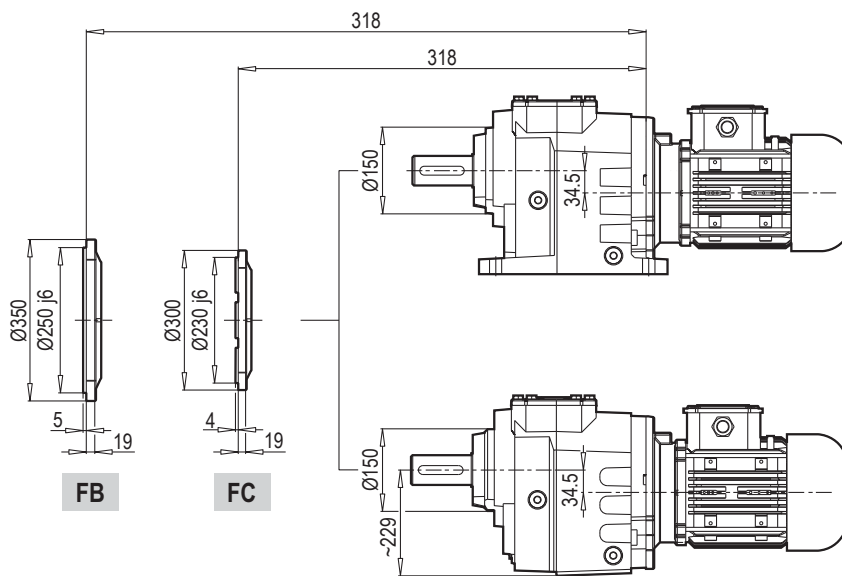
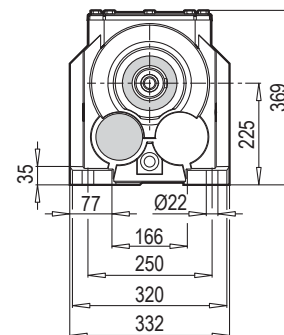
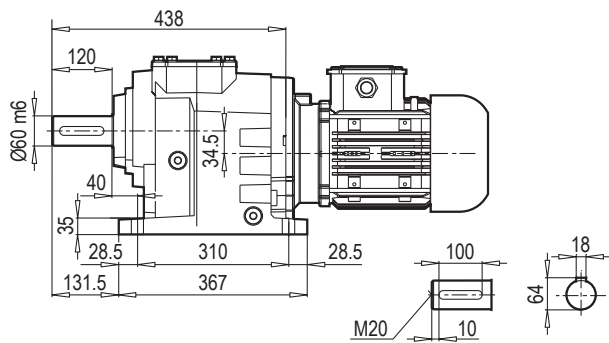
Редуктор	PAM B5	Øa2	Øb2	Øe2	f2	Øs2	Ød1	l1	t1	u1	o
A/F 601	100	250	180	215	5.5	M12	28	62	31.3	8	76
	112	250	180	215	5.5	M12	28	62	31.3	8	76
	132	300	230	265	5.5	M12	38	82	41.3	10	101
	160	350	250	300	7	M16	42	112	45.3	12	148
	180	350	250	300	7	M16	48	112	51.8	14	148

<b>~ Kr</b>	
PAM B5	A/F 601
100	37
112	37
132	40
160	47
180	47

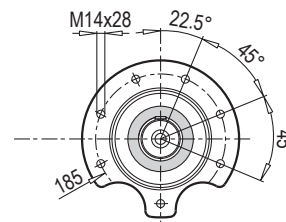
Редуктор	PAM B14	Øa2	Øb2	Øe2	f2	Øs2	Ød1	l1	t1	u1	o
A/F 601	100	160	110	130	3.5	9	28	62	31.3	8	76
	112	160	110	130	3.5	9	28	62	31.3	8	76
	132	200	130	165	3.5	11	38	82	41.3	10	101

<b>~ Kr</b>	
PAM B14	A/F 601
100	34.5
112	34.5
132	38

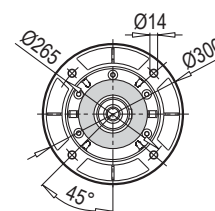
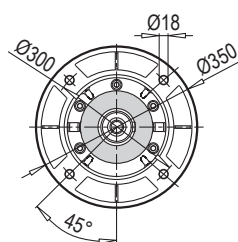
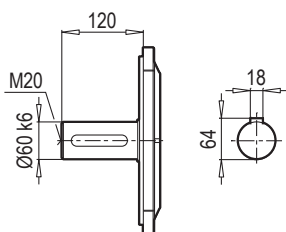
A 602 - 603



AF 602 - 603

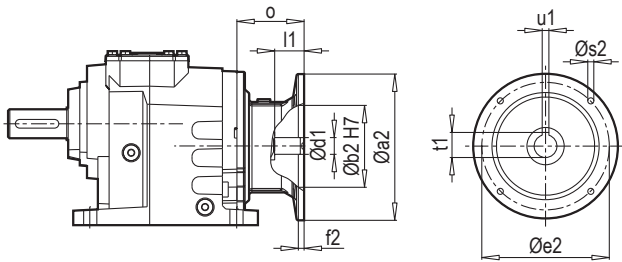
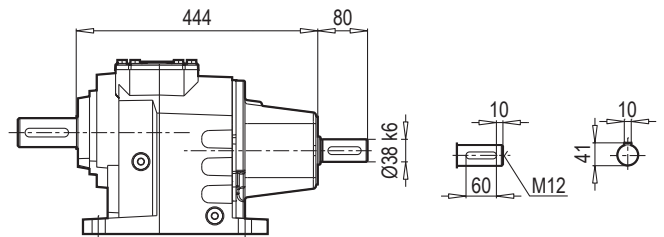
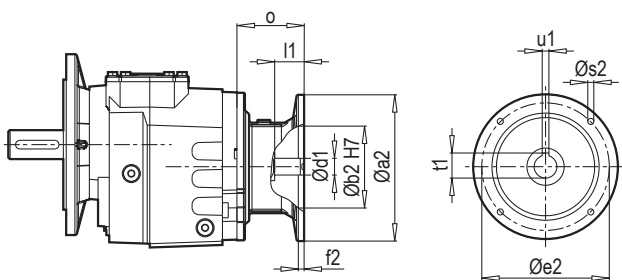
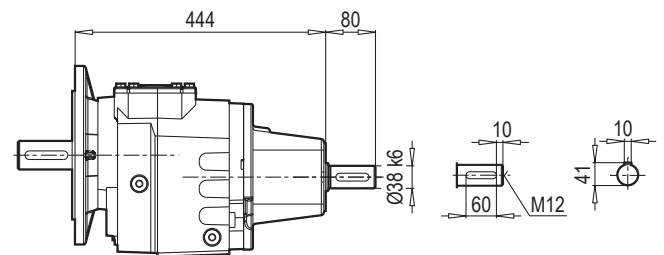
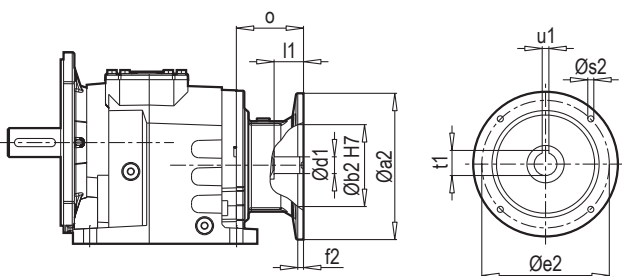
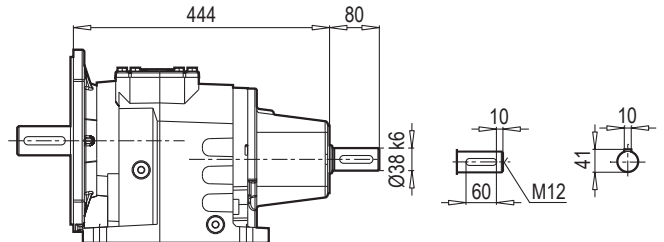


F 602 - 603



FB

FC

**A 602-603 PAM B5/B14**

**A 602-603 W**

**F 602-603 PAM B5/B14**

**F 602-603 W**

**AF 602-603 PAM B5/B14**

**AF 602-603 W**


W ~ Kr	
A/F 602-603	90

Редуктор	PAM B5	Øa2	Øb2	Øe2	f2	Øs2	Ød1	l1	t1	u1	o
A/F 602 A/F 603	90	200	130	165	5	M10	24	52	27.3	8	61
	100	250	180	215	5.5	M12	28	62	31.3	8	76
	112	250	180	215	5.5	M12	28	62	31.3	8	76
	132	300	230	265	5.5	M12	38	82	41.3	10	101
	160	350	250	300	7	M16	42	112	45.3	12	148
	180	350	250	300	7	M16	48	112	51.8	14	148

~ Kr	
PAM B5	A/F 602-603
90	81
100	85
112	85
132	88
160	94
180	94

Редуктор	PAM B14	Øa2	Øb2	Øe2	f2	Øs2	Ød1	l1	t1	u1	o
A/F 602 A/F 603	90	140	95	115	3	9	24	52	27.3	8	61
	100	160	110	130	3.5	9	28	62	31.3	8	76
	112	160	110	130	3.5	9	28	62	31.3	8	76
	132	200	130	165	3.5	11	38	82	41.3	10	101

~ Kr	
PAM B14	A/F 602-603
90	78
100	80
112	80
132	86

**W - IEC - PAM**

Редуктор	i	4- пол. 50Гц 1400об/мин n <sub>2</sub> [об / мин]	M <sub>a</sub> макс f <sub>B</sub> =1 4 - пол. [ Нм ]	P <sub>1</sub> макс W f <sub>B</sub> ≥ 1			PAM - IEC												
				4 - пол. 1400об/мин	FR1 [кН]	FR2 (M) [кН]													
<b>A603</b> <b>F603</b> <b>W</b> 1 <b>+ PAM - IEC</b> 1	242.67	5.8	3600	2.17	4.0	22.0	90	100	112	132									
	215.56	6.5	3500	2.38	4.0	22.0	90	100	112	132									
	194.31	7.2	3500	2.64	4.0	22.0	90	100	112	132									
	181.13	7.7	3500	2.83	4.0	22.0	90	100	112	132									
	160.90	8.7	3500	3.19	3.9	22.0	90	100	112	132									
	143.57	9.8	3500	3.57	3.9	22.0	90	100	112	132									
	134.25	10.4	3500	3.82	3.9	22.0		100	112	132	160								
	121.02	11.6	3500	4.24	3.9	22.0		100	112	132	160								
	100.21	14.0	3500	5.12	3.9	22.0		100	112	132	160								
	93.60	15.0	3500	5.48	3.8	22.0		100	112	132	160								
	84.37	16.6	3500	6.08	3.8	22.0		100	112	132	160								
	79.98	17.5	3500	6.42	3.8	22.0		100	112	132	160								
	69.87	20.0	3500	7.34	3.7	22.0		100	112	132	160								
	55.75	25.1	3500	9.20	3.7	22.0				132	160								
	<b>A602</b> <b>F602</b> <b>W</b> 1 <b>+ PAM - IEC</b> 1	50.91	27.5	3300	9.50	3.6	22.0	100	112	132									
45.27		30.9	3300	10.69	3.6	22.0	100	112	132	160									
40.81		34.3	3300	11.85	3.5	21.7	100	112	132	160									
38.00		36.8	2800	10.80	3.6	22.0	100	112	132										
33.79		41.4	3200	13.88	3.4	20.0	100	112	132	160									
30.35		46.1	3200	15.46	3.4	18.9	100	112	132	160									
28.36		49.4	3300	17.06	3.3	17.8	100	112	132	160	180								
25.57		54.8	3300	18.92	3.2	16.8	100	112	132	160	180								
23.66		59.2	3300	20.45	3.1	16.1	100	112	132	160	180								
21.17		66.1	3200	22.16	3.1	15.4	100	112	132	160	180								
19.59		71.5	3200	23.94	3.0	14.7	100	112	132	160	180								
17.60		79.5	3200	26.65	2.9	13.8	100	112	132	160	180								
15.87		88.2	3200	29.56	2.7	12.9	100	112	132	160	180								
13.14		106.5	3100	34.59	2.5	11.8	100	112	132	160	180								
10.91		128.3	3000	40.31	2.2	10.8				132	160	180							
9.83	142.4	2800	41.74	2.2	10.8				132	160	180								
8.14	171.9	2500	45.01	2.0	10.6				132	160	180								
6.92	202.4	2300	48.74	1.8	10.4				132	160	180								
6.24	224.5	2000	47.02	1.9	10.9				132	160	180								
5.16	271.1	1800	51.10	1.7	10.5				132	160	180								
<b>A601</b> <b>F601</b> <b>W</b> 1 <b>+ PAM - IEC</b> 1	8.30	168.7	650	11.48	3.4	5.0	100	112	132	160									
	7.45	187.8	650	12.78	3.4	5.0	100	112	132	160									
	6.15	227.5	640	15.25	3.3	4.9	100	112	132	160									
	5.20	269.2	620	17.48	3.1	4.6	100	112	132	160	180								
	4.81	290.9	620	18.89	3.1	4.4	100	112	132	160	180								
	4.28	327.3	610	20.90	3.0	4.2				132	160	180							
	3.65	383.6	600	24.10	2.8	3.9	100	112	132	160	180								
	3.23	433.8	600	27.25	2.7	3.7	100	112	132	160	180								
	2.44	572.7	550	32.98	2.4	3.4				132	160	180							
	2.00	700.0	450	32.98	2.4	3.3				132	160	180							
1.38	1011.1	450	47.64	1.7	2.8				132	160	180								
1.27	1103.8	400	46.23	1.8	2.8				132	160	180								